



Centraali

RIGHT AT THE CORE.

FLOOR PLANS

[CENTRAALI.FI/EN](https://centraali.fi/en)

OFFICE

FLOOR 2

SPACE 1208 m2

TYPE Office

PEOPLE 91

Open for lease 1208 m2 high-level and modern 2nd floor office space from a very visible location in the heart of Helsinki city centrum. Here is a rare opportunity to lease a space from one of the most valued locations in Helsinki. People amounts are directive.

GET TO KNOW OUR SPACES



TÖÖLÖNLAHDENKATU 3 B, 2ND FLOOR OFFICE 1208 m², ~85 WORK STATIONS

TÖÖLÖNLAHDENKATU



WORKING SPACES ~ 85 work stations	MEETING ROOMS 15 pcs, 4-18 ppl	OTHERS Working cafe, lobby, copy/print, storage	WC 9 pcs
--------------------------------------	-----------------------------------	---	-------------



1:200 (A3)
FURNITURE AND SCALE INDICATIVE

OFFICE

FLOOR	3
SPACE	848 m ²
TYPE	Office
PEOPLE	74

Open for lease 247 m² high-level and modern 3rd floor office space from a very visible location in the heart of Helsinki city centrum. Here is a rare opportunity to lease a space from one of the most valued locations in Helsinki. This space is possible to combine with 621 m² space on the same floor. People amounts are directive.

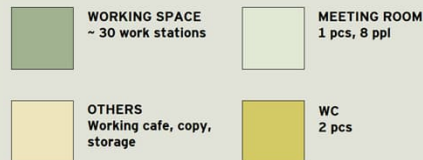


TÖÖLÖNLAHDENKATU 3 B, 3RD FLOOR

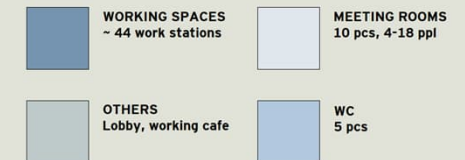


TÖÖLÖNLAHDENKATU

OFFICE 247 m² ~ 30 WORK STATIONS



OFFICE 621 m² ~ 44 WORK STATIONS

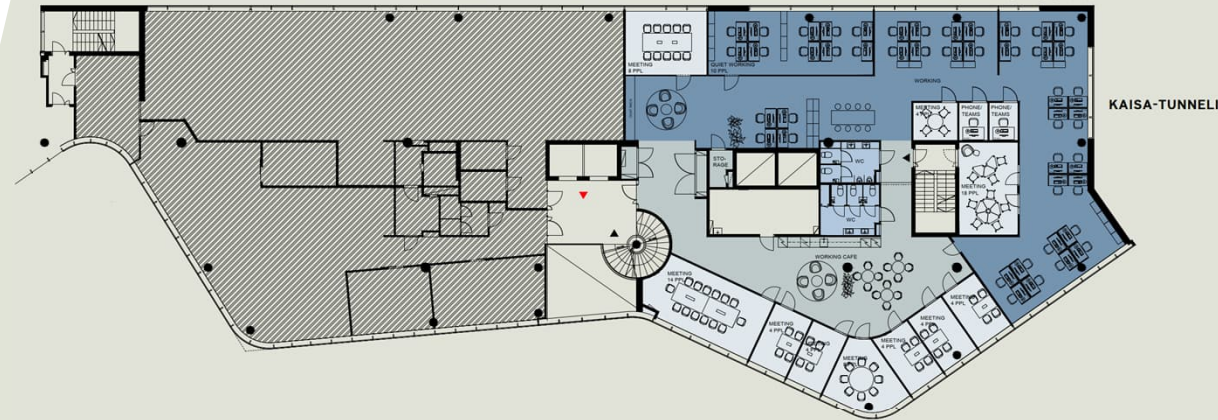


1:200 (A3)

OFFICE

FLOOR 3
SPACE 621 m²
TYPE Office
PEOPLE 47

Open for lease 621 m² high-level and modern 3rd floor office space from a very visible location in the heart of Helsinki city centrum. Here is a rare opportunity to lease a space from one of the most valued locations in Helsinki. This space is possible to combine with 247 m² space on the same floor. People amounts are directive.



TÖÖLÖNLAHDENKATU 3 B, 3RD FLOOR OFFICE 621 m², ~44 WORK STATIONS

TÖÖLÖNLAHDENKATU



	WORKING SPACES ~ 44 work stations		MEETING ROOMS 10 pcs, 4-18 ppl		OTHERS Working cafe, lobby, storage		WC 5 pcs
--	--------------------------------------	--	-----------------------------------	--	---	--	-------------

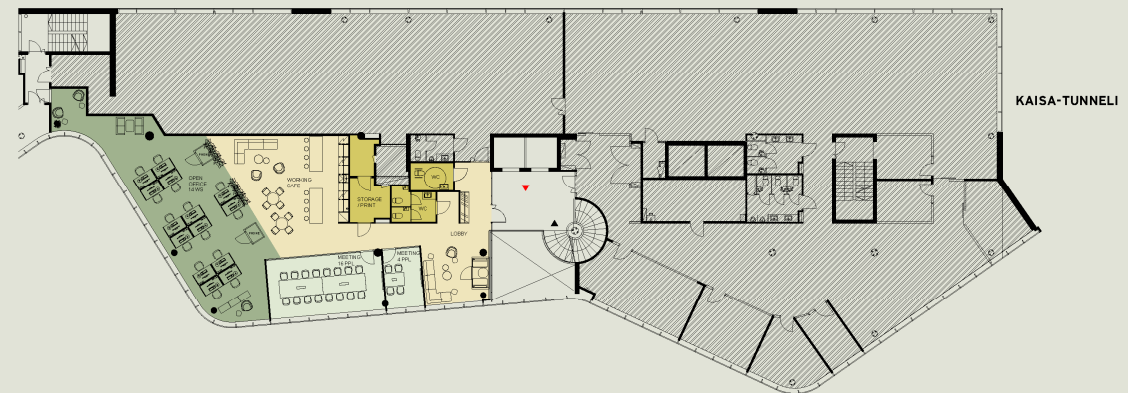


1:200 (A3)
FURNITURE AND SCALE INDICATIVE

OFFICE

FLOOR	4
SPACE	283 m2
TYPE	Office
PEOPLE	23

Open for lease 300 m2 high-level and modern 4th floor office space from a very visible location in the heart of Helsinki city centrum. Here is a rare opportunity to lease a space from one of the most valued locations in Helsinki. People amounts are directive.



TÖÖLÖNLAHDENKATU 3 B, 4TH FLOOR OFFICE 283 m², ~14 WORK STATIONS

TÖÖLÖNLAHDENKATU



WORKING SPACES
~ 14 work stations

MEETING ROOMS
2 pcs, 4-16 ppl

OTHER
Working cafe
Lobby

WC 3 pcs
STORAGE, PRINT



1:200 (A3)

OFFICE

FLOOR	3
SPACE	247 m2
TYPE	Office
PEOPLE	38

Open for lease 247 m2 high-level and modern 3rd floor office space from a very visible location in the heart of Helsinki city centrum. Here is a rare opportunity to lease a space from one of the most valued locations in Helsinki. This space is possible to combine with 621 m2 space on the same floor. People amounts are directive.



TÖÖLÖNLAHDENKATU 3 B, 3RD FLOOR OFFICE 247 m², ~30 WORK STATIONS

TÖÖLÖNLAHDENKATU



 WORKING SPACES ~ 30 work stations	 MEETING ROOMS 1 pcs, 8 ppl	 OTHERS Working cafe, lobby, storage, copy/print	 WC 2 pcs
--	---	---	---

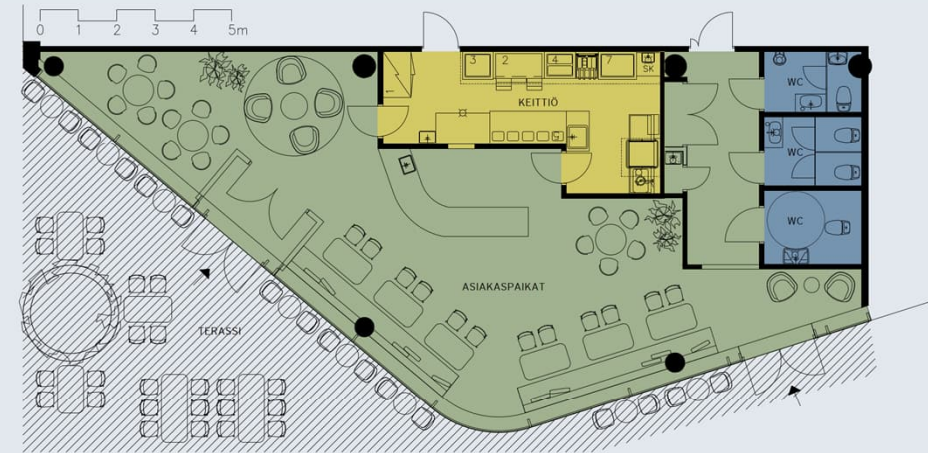


1:200 (A3)
FURNITURE AND SCALE INDICATIVE

LIIKETILA

FLOOR	1
SPACE	138 m ²
TYPE	Retail

138 m² retail unit for rent, which also includes storage spaces. Here is a rare opportunity to lease a space from one of the most valued locations in Helsinki.



TÖÖLÖNLAHDENKATU 3 A, 1ST FLOOR, RESTAURANT 138 m²

TÖÖLÖNLAHDENKATU



RESTAURANT
45 PPL

KITCHEN

TOILET
3 PCS

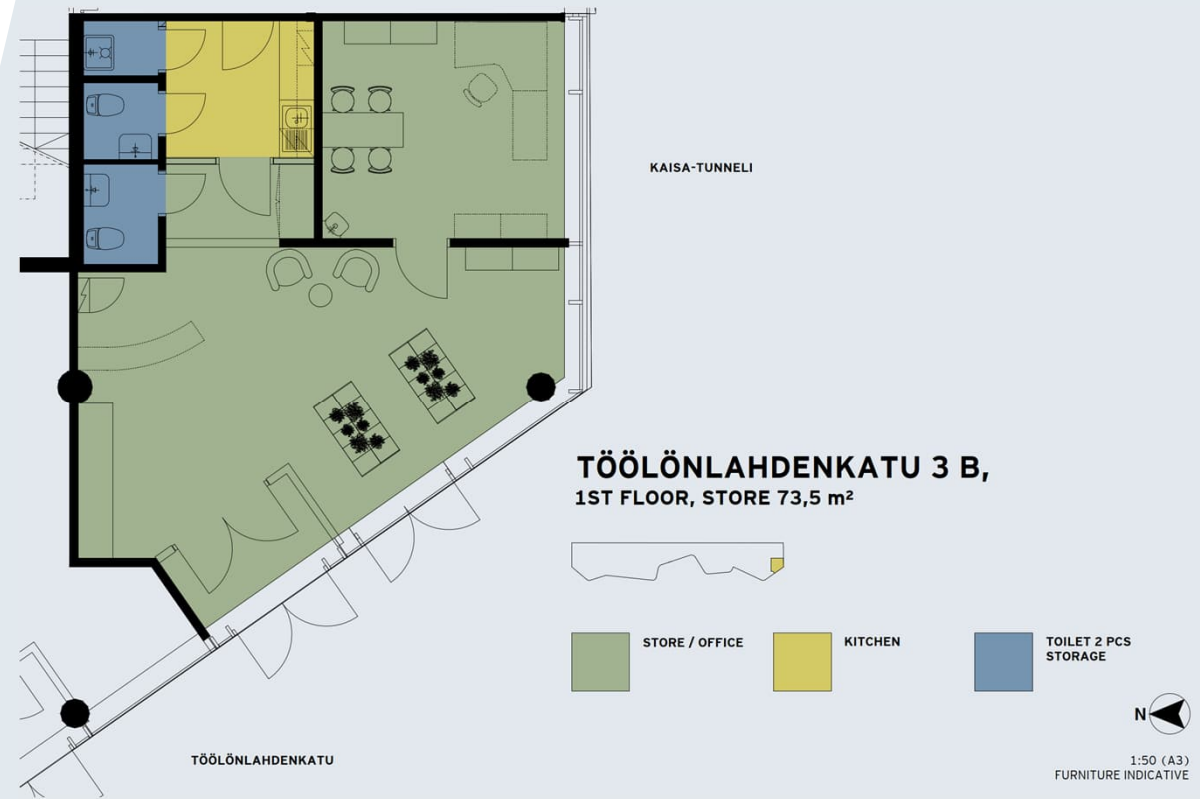
TERRACE
40 PPL

N
1:75 (A3)
FURNITURE INDICATIVE

LIIKETILA

FLOOR Katutaso
SPACE 73,5 m²
TYPE liiketila

73,5 m² retail unit for rent. Here is a rare opportunity to lease a space from one of the most valued locations in Helsinki.



Centraali

RIGHT AT THE CORE.

Centraali

Töölönlahdenkatu 3

00100 HELSINKI

Newsec Property Leasing

Phone: 020 742 0480

During weekdays 8-16

newsec 