



Centraali

RIGHT AT THE CORE.

OFFICES IN
THE CENTRE
OF HELSINKI

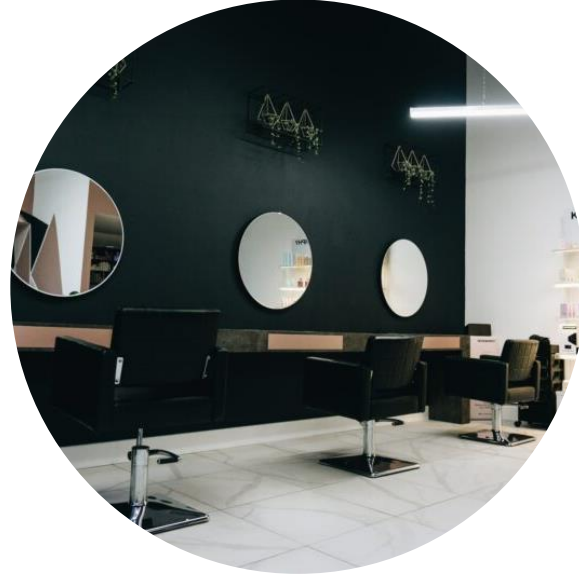
[CENTRAALI.FI/EN](https://centraali.fi/en)

OFFICES IN THE CENTRE OF HELSINKI

Centraali resides between the Central Railway Station and the Central Library Oodi. It's the perfect place to access all the endless services downtown Helsinki offers.

It's easy to get to Centraali from anywhere in the capitol region – and further afield. Countless trains, metros, trams, and buses stop right next door. Even the Baana cycle path is right next to the office. If you need space to think, the adjacent Töölönlahdenpuisto Park is an excellent place for walking meetings.

[GET TO KNOW OUR SPACES](#)



ALL THE SERVICES THAT THE CENTRE OF THE CITY HAS TO OFFER

All the services of the city centre – restaurants, shops, cafés, hairdressers and shoemakers – are within easy reach, even during a short lunch break. Of course, you will also be served numerous lunch restaurants close by. Whether you're hungry for culture or just plain hungry, there's sure to be plenty to choose from.

EXAMPLE OF A FURNISHED FLOOR PLAN

FLOOR 2
SPACE 1208 m²
TYPE Office
PEOPLE 91

Open for lease 1208 m² high-level and modern 2nd floor office space from a very visible location in the heart of Helsinki city centrum. Here is a rare opportunity to lease a space from one of the most valued locations in Helsinki. People amounts are directive.

GET TO KNOW OUR SPACES



TÖÖLÖNLAHDENKATU 3 B, 2ND FLOOR
OFFICE 1208 m², ~85 WORK STATIONS



- WORKING SPACES**
~ 85 work stations
- MEETING ROOMS**
15 pcs, 4-18 ppl
- OTHERS**
Working cafe, lobby, copy/print, storage
- WC**
9 pcs



1:200 (A3)
FURNITURE AND SCALE INDICATIVE

HIGH-STANDARD AND COMFORTABLE OFFICES

Completed in 2014, Centraali's facilities are modern and spacious. The premises meet the needs of even demanding employees and invite them to visit the office more often. High-quality interior materials absorb sound and create a pleasant working environment.

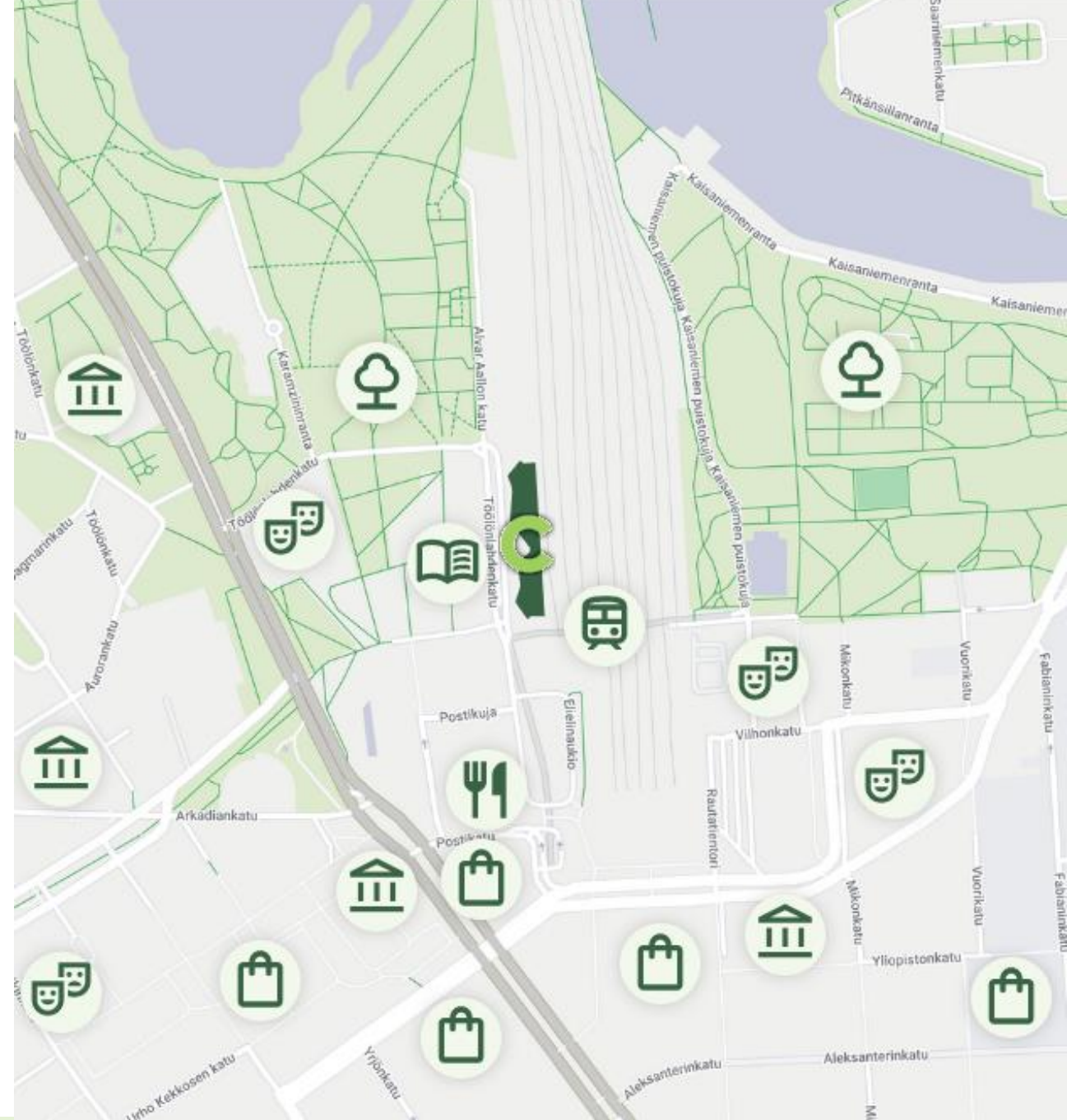
The windows of most offices open to a view of the railway yard, where the movement of the trains inspires new thinking.

[CONTACT US](#)



LOCATION AND NEARBY SERVICES

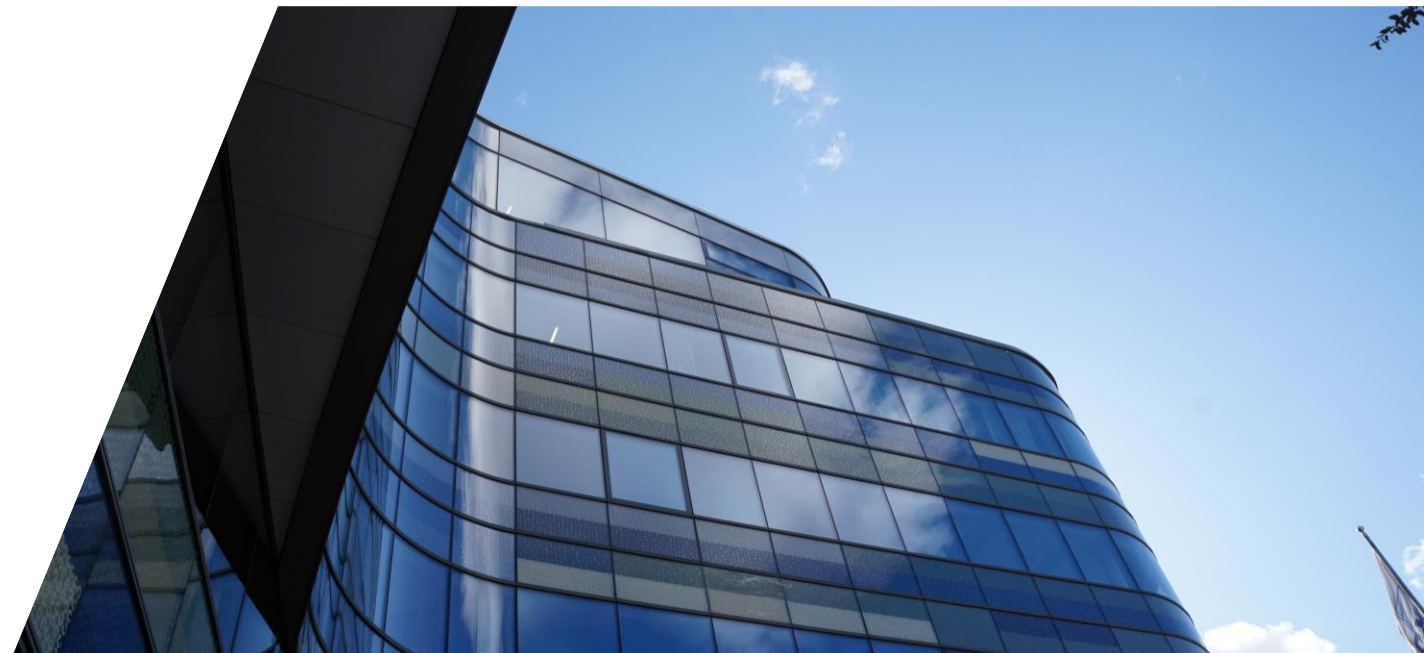
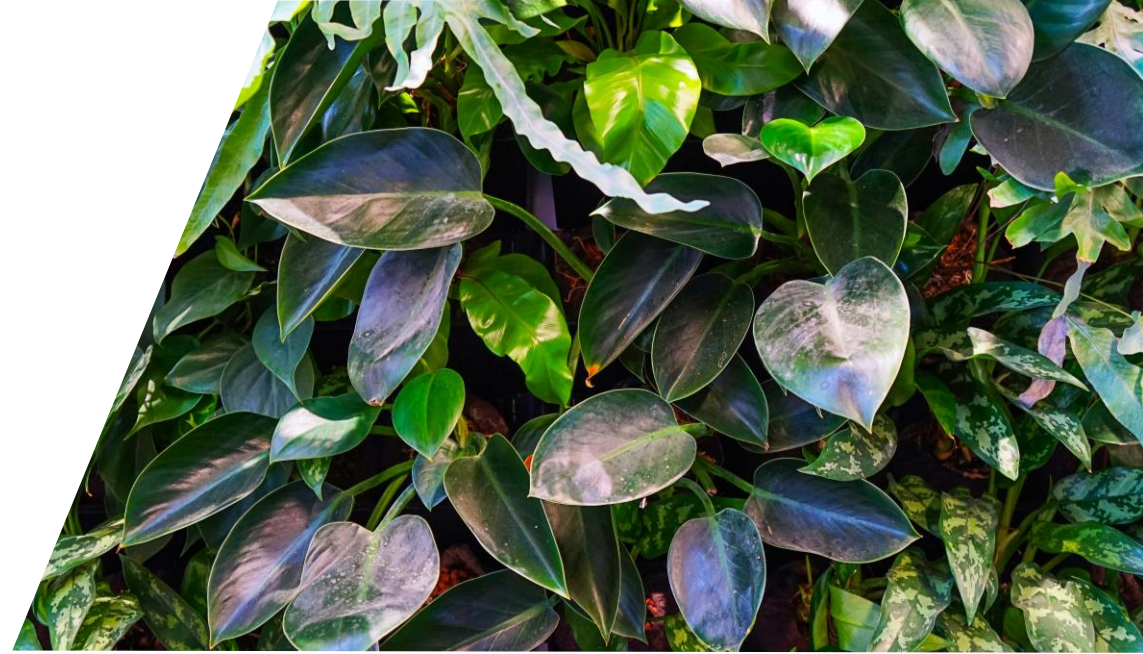
Centraali's location right in the heart of the city of Helsinki brings all comprehensive services close to your workplace. Arriving at Centraali is also very easy, whether you come by train, metro, trolley, bus or bike. The central location with good transport connections and comprehensive services make it easier to achieve a successful work-life balance!



A RESPONSIBLE OFFICE IN A DESIRABLE LOCATION

Would you like to have your company logo in a place where it is seen by up to 250,000 people every day? With one of the most visible and sought-after locations in Helsinki, you can.

Sustainability is guaranteed. Centraali is easy to commute to using public transportation and the building itself is highly optimized to reduce energy consumption, for example. In fact, Centraali has been awarded **LEED Gold certification** to prove the property's environmental responsibility.



CONTACT US

Matias Koistinen

Leasing Manager

matias.koistinen@newsec.fi

+358 50 571 1633

Lena Schreiber

Senior Leasing Manager

lena.schreiber@newsec.fi

+358 50 350 5981

CONTACT US



Centraali

RIGHT AT THE CORE.

Centraali

Töölönlahdenkatu 3

00100 HELSINKI

Newsec Property Leasing

Phone: 020 742 0480

During weekdays 8-16

newsec 